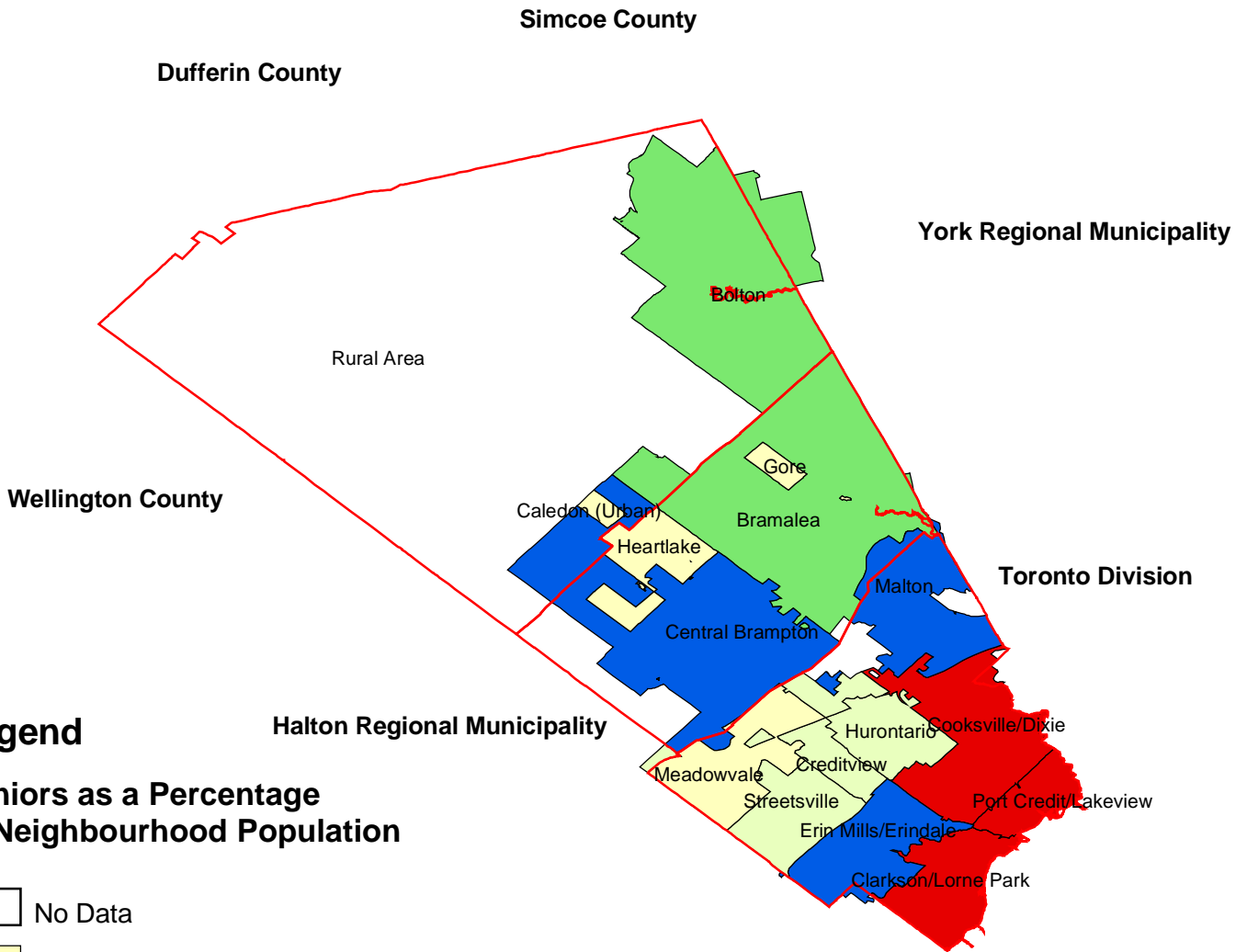




# The Senior Population (Ages 65+ Years) by Peel Neighbourhoods, 2001



## Legend

### Seniors as a Percentage of Neighbourhood Population

- No Data
- 4%
- 4.1% - 6%
- 6.1% - 7%
- 7.1% - 8%
- 8.1% - 14%
- Peel Boundary

0 5 10 20 Kilometers

Seniors (%):  
Peel (8.0%); Canada (13.0%); Ontario (12.9%).

Source: Statistics Canada, Census of Canada, 2001

Prepared by Srimanta Mohanty  
for the Social Planning Council of Peel,  
December 9, 2005.